

## A Note From Dean Ambrosia

Dear Friends,

The School's long anticipated move to East Harlem was completed in December 2020. We are so excited to be here, and we hope that in the coming months we will be able to host more "in-person visits."

The new campus is designed to create an environment that will foster success as students navigate their rigorous accelerated program and move between home, jobs, onsite classes, and clinical rotations. We are located just one block away from the Metro North Station, a designated stop on the MSHS Shuttle.

Highlights of the new space include:

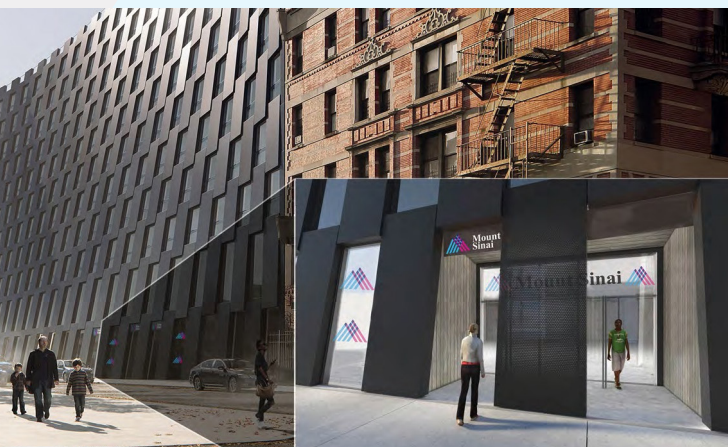
- A state-of-the-art simulation center featuring hospital inpatient, primary care, home care, and operating room settings
- A multi-purpose auditorium
- A spacious and comfortable Student Lounge
- A Study Center equipped with technology resources, as well as individual study spaces
- Learning environments specifically designed for nursing education

Our new location brings us closer to The Mount Sinai Hospital and the Icahn School of Medicine, and provides our students, faculty, and staff with greater opportunities for inter-professional learning, special initiatives, and the ability to better engage with the local community.



Todd F. Ambrosia, DNP, MSN, APRN, FNP-BC, FNAP  
Dean

*Distinguished Fellow, National Academies of Practice  
Bravewell Fellow in Integrative Medicine*



Mount  
Sinai

Phillips School  
of Nursing  
At Mount Sinai Beth Israel