



For All Health Care Providers

# Doctors' Digest

Integrating Occupational Medicine Best Practices into Primary and Specialty Care



**Michael Crane, MD, MPH**

Medical Director,  
Selikoff Centers  
for Occupational  
Health

## Message from the Director: The Health Care Provider's Journey

When you refer patients to a specialty practice, you trust that your patients will receive the treatment they deserve. In occupational medicine, treatment means getting the patient back to work, accessing benefits, and preventing future adverse health conditions caused by the work environment.

In a recent [study](#), we learned that some providers are unsure when to refer a patient to an occupational health center. As part of our response to that study, we offer a new letter and a path forward to providers. We welcome an exchange of knowledge and ideas with you and our board-certified occupational medicine physicians.

[Occupational medicine](#) is an ever-changing field. New industries mean new jobs and unknown health hazards. Our doctors understand the challenges and collaborate with specialty care providers to deliver holistic care and treatment.

In the coming months, we would like to visit with your clinical team to discuss our approach and ways to support your practice. If you would like to arrange a visit, please call us at 212-824-7118. To learn more, visit: [mountsinai.org/selikoff](https://mountsinai.org/selikoff).

## Our Medical Directors



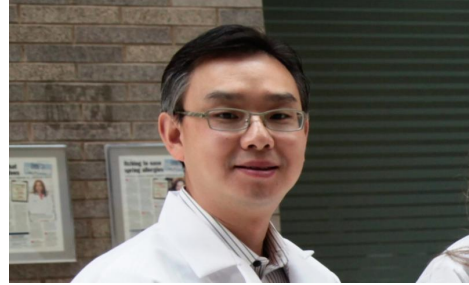
**Sharon Lee, MD, MPH (Manhattan)**

Dr. Lee is a board-certified occupational medicine and general preventive medicine physician with expertise in the prevention, diagnosis and treatment of a wide array of occupational illnesses and injuries. Her medical interests include occupational health for biotechnology and health care workers. She is the Medical Director for the Selikoff Centers in Manhattan and an Assistant Professor in the [Department of Environmental Medicine and Public Health](#).

**Winston Kwa, MD, MPH (Yonkers)**

Dr. Kwa's medical interests include occupational diseases such as occupational asthma, asbestos-related lung diseases, and silicosis. He is the Medical Director for the Selikoff Centers in Mid-Hudson Valley, an Associate Professor in the Department of

Environmental Medicine and Public Health, and an impartial specialist as well as an Advisory Council Member on the [New York State Worker's Compensation Board](#). Dr. Kw a is also board-certified in occupational medicine.



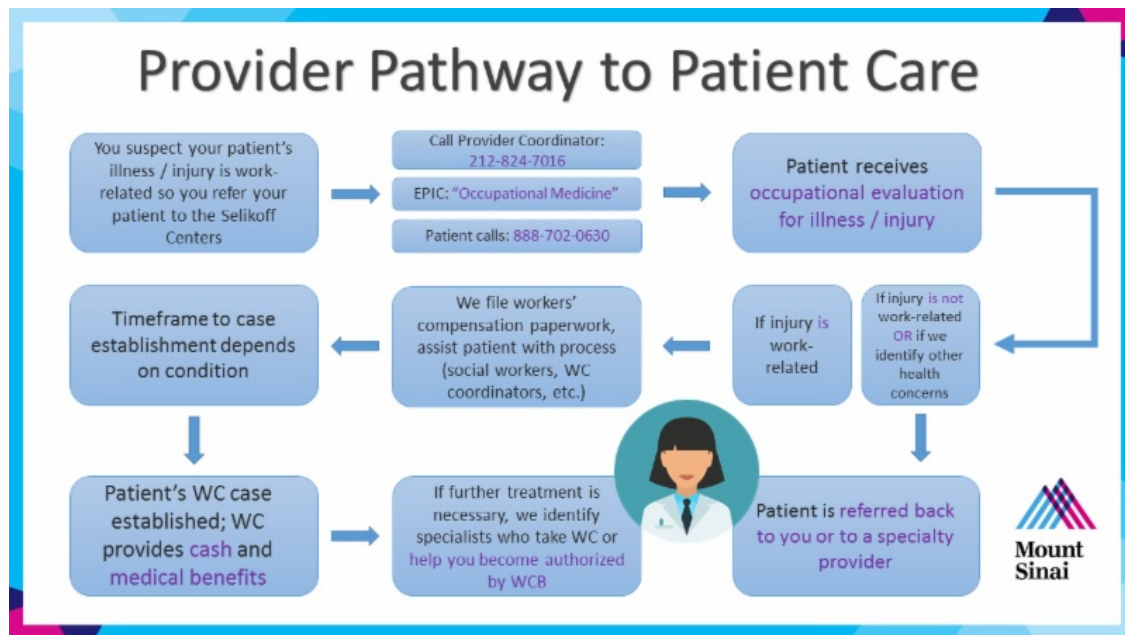
### [Yelena Globina, MD, MPH \(Staten Island\)](#)

Dr. Globina conducts medical surveillance and treatment for diverse worker populations and has experience in the treatment and care of World Trade Center Health Program patients. She is a board member of the [New York OEM Association](#), and a member of the [ACOEM](#) and the [Medical Society of New York](#). She's the Medical Director for the Selikoff Centers in Staten Island and an Assistant Professor in the Department of Environmental Medicine and Public Health. Dr. Globina is also board-certified in occupational medicine.

## Health Care Provider Referral Pathway

To refer a patient:

- Call our **Provider Coordinator** at **212-824-7016**
- Do so via **EPIC**: "Occupational Medicine" or "Workers' Compensation"
- Patients can schedule via our **patient call center** at **888-702-0630**



[Learn More](#)



This newsletter was launched in 2018 to facilitate referrals for workers' compensation patients and improve access to occupational medicine resources. If you would like to stop receiving this newsletter, please click the "unsubscribe" link below.