

## What Is MACE?

The Mobile Acute Care for the Elderly (MACE) team will manage your care while you are in the hospital and maintain close contact with your doctor, ensuring safe, seamless continuity of care from hospital to home.

The MACE team includes an attending geriatrician, geriatrics fellow, nurse coordinator and social worker.



Jeffrey Farber, M.D. (212-659-8552)



MOUNT SINAI  
SCHOOL OF  
MEDICINE

MARTHA STEWART  
CENTER for LIVING  
AT MOUNT SINAI



Leading Geriatric Medicine

Martha Stewart Center for Living  
1440 Madison Avenue  
New York, New York 10029  
(212) 659-8552

Your Doctors in the Hospital are:

Attending:

---

Fellow:

---

Your Primary Care Doctor is:

---



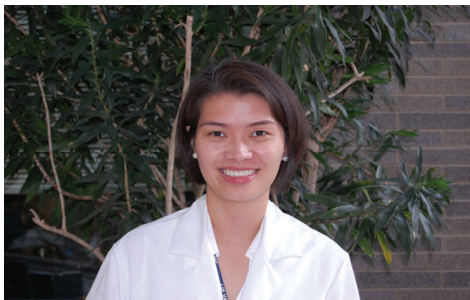
**YOUR MACE TEAM**

*Mobile  
Acute Care  
for the  
Elderly*

## HOW DOES MACE WORK?

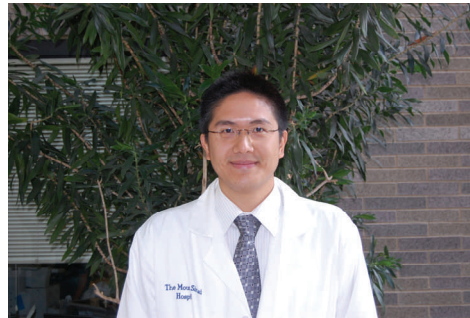
The MACE team is committed to providing regular communication with you and your caregiver and is available Monday through Friday. On weekends, a covering attending and fellow will care for you. You should expect clear and comprehensive discharge instructions and a follow-up phone call after discharge to answer questions and review medications, appointments and other professional services.

Your medical care is directed by an attending physician and geriatrics fellow. Medical consultants and residents may also be working with the team.



Kristina Gustavo, M.D. (212-659-

In addition, a nurse coordinator will meet with you to discuss medication and disease management. The social worker will discuss pre-hospitalization arrangements and coordinate a safe discharge plan. You may also be visited by a volunteer providing companionship and activities.



Fred Ko, M.D. (212-659-8552)



Sapina Kirpalani, MSN, RN, ANP  
(212) 241-4741



Anne Kleinman, Social Worker (212-241-3553)

We are proud to be part of a long-standing tradition of providing outstanding geriatric care as one of the highest ranked geriatric programs in the country.

To continue training future generations of physicians to geriatric-sensitive care, you may be asked to participate in a voluntary research project.



Martine Sanon, M.D. (212-659-8552)