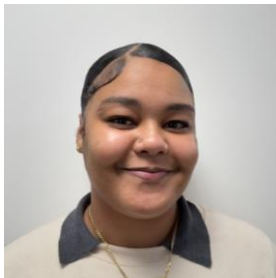




**Rachel Maria, Patient Service Representative**

As the Patient Service Representative at Mount Sinai CARES, Rachel serves as the first point of contact for patients and families upon arrival. Rachel manages check-ins, scheduling, insurance verification, and patient communication while helping maintain a welcoming and organized environment. Rachel joined Mount Sinai in 2023 after earning a bachelor's degree in Sociology and Anthropology with a minor in Psychology. Her work is guided by a deep passion for helping others and a long-term goal of becoming a licensed clinical social worker. Rachel strives to make every interaction meaningful and ensure each person feels seen, supported, and informed from the moment they arrive.



**Ronelle Pelissier, Social Work Assistant**

Ronelle is a Social Work Assistant at CARES and a proud CARES alumnus. Having experienced firsthand the program's profound impact, she is deeply committed to supporting teens and families seeking help. As the first point of contact for most applicants, Ronelle works to ensure every family feels welcomed, understood, and hopeful as they begin their journey toward positive change.



**Jazmine Landa, Program Coordinator III**

Jazmine is the Program Coordinator for the Comprehensive Adolescent Rehabilitation and Education Service (CARES) at Mount Sinai. She holds a Bachelor of Science degree and has been part of the CARES team since 2010. She works closely with the team to ensure the program runs smoothly and effectively. In her role, she supports staff and participants by maintaining structure, organization, and a welcoming environment for everyone who walks through the doors. Jazmine is proud to be part of a program dedicated to meeting the emotional, behavioral, and academic needs of adolescents and young adults, and she is passionate about contributing to a space where growth, healing, and connection are possible.



**Randi Adelman, PMHNP- BC, Psychiatric Nurse Practitioner**

Randi Adelman, NP, is a Nurse Practitioner and Team Leader at CARES. She is a Board-Certified Nurse Practitioner in the field of Psychiatric Mental Health Nursing, having earned her Master's Degree at Columbia University in 2004. Adelman has been at CARES since 2015, providing medication management, and group and individual therapy. Prior to CARES, she worked in the Mount Sinai Outpatient Department for 10 years, working with individuals across the lifespan. She has extensive experience working with children, teens and adults with a variety of mental health and substance use diagnoses.



**Ilse Gomez, LCSW, School Social Worker, ReStart Academy**

Ilse is a Clinical School Social Worker at ReStart Academy at CARES, part of District 79 Alternative Programs, with over 15 years of experience supporting adolescents in alternative education settings. She specializes in addressing students' mental health needs and guiding them through the IEP and 504 processes. Ilse ensures that accommodations and services are implemented in accordance with Special Education guidelines, and she collaborates closely with school and program leadership, as well as teaching staff, to foster a supportive, inclusive, and effective learning environment for all students.



**Elizabeth O'Brien, Guidance Counselor, ReStart Academy**

Elizabeth "Lizzie" O'Brien is the School Counselor at ReStart Academy at CARES. She has been with ReStart Academy since 2022, and in 2025 joined the team at CARES. In her role, she supports students with their academic needs and helps them feel confident about their next steps in their education. She is excited to work with students this year.



**Mona Harewood, Community Coordinator**

Mona Harewood (she/her) is a Community Coordinator with ReStart Academy – District 79 under NYC Public Schools (NYCPS). She is currently the Educational Coordinator at CARES with her main focuses being overall student consistency with their commitment to the program, administrative support for all members of the community, and other operational responsibilities. She is also the site's liaison in collaboration with the NYCPS Office of Food and Nutrition Services, Office of Pupil Transportation and Department of Health.



**Alessandra Hussain, UPRISE Social Worker, LMSW, CASAC**

Ally Hussain, LMSW, CASAC is a clinical social worker with Mount Sinai's UPRISE program. She earned her MSW from the Silberman School of Social Work at Hunter College, with concentrations in sexuality and gender, and child welfare. Ally has experience working with adults, adolescents, children, and couples across a wide range of mental health and substance use concerns in outpatient and addiction treatment settings, school-based programs, hospital environments, and private practice. Ally draws from a variety of therapeutic modalities (e.g., psychodynamic therapy, Cognitive Behavioral Therapy (CBT), Dialectical Behavior Therapy (DBT), Narrative Therapy, and Motivational Interviewing) and integrates these approaches to meet the unique needs of each client. Grounded in the

belief that safe and meaningful relationships are a core human need, Ally is committed to fostering a therapeutic relationship rooted in trust, collaboration, and genuine connection.

Sarah Vo, LMSW

Megan Quinn, LCSW