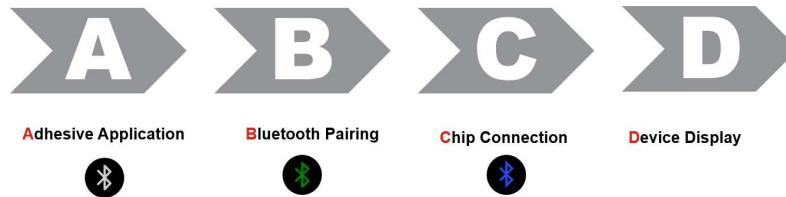


Radius PPG Wireless Sensor Set-up

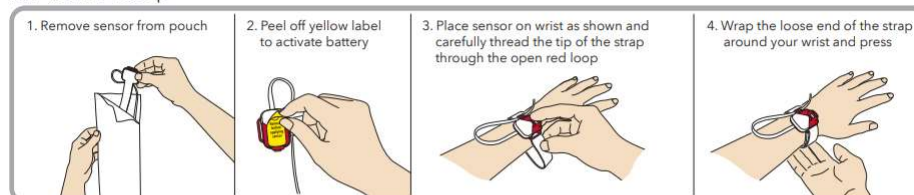
This module will review the "ABCD" concept designed to facilitate the proper workflow for the use of Radius PPG



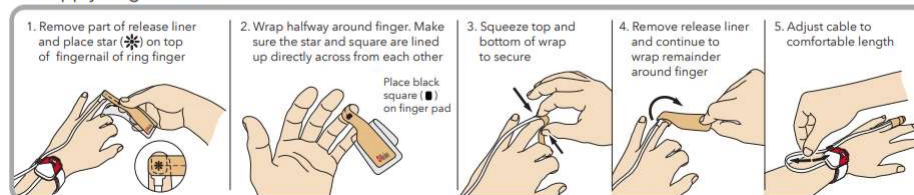
A Adhesive Application

How to Apply your Sensor

2.1 Sensor Set Up



2.2 Apply Finger Sensor

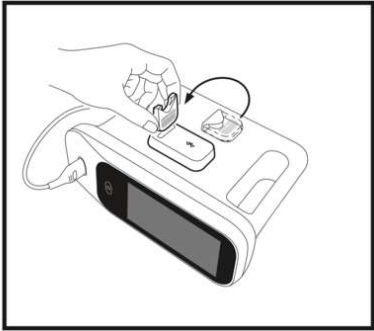
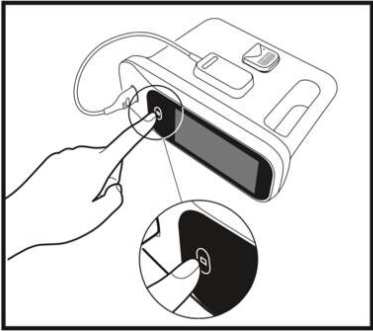



301295/106898-0320



B

Bluetooth Pairing






C


Chip Connection

2.3 Insert Chip


1. Insert the chip into the open compartment on the sensor




2. Press down on the chip to secure




Click





Listen for click to secure.





Look for light to confirm connection.





301295/106898-0320

D Device Display

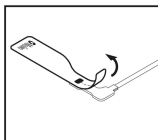
- Once the chip and receiver are paired, verify patient data display on device...



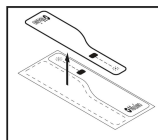
Trend View



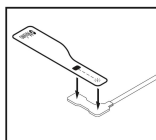
Applying replacement tape (for Neo sensor only)



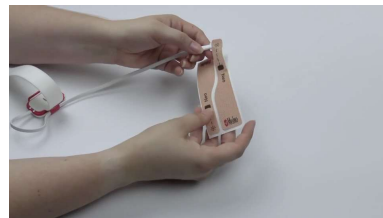
- Remove the existing tape and discard



Remove the replacement tape from the release liner.



Position the replacement tape over the sensor, aligning the emitter component with the sensor cable.



Taking an NIBP Measurement



Wait for measurement to complete or touch the *Stop Button* to abort



Wait for measurement values to appear to ensure that spot check is complete



Taking a Temperature Measurement

1. Remove the temperature probe from the probe well to initiate spot-check. Ready will appear in status bar and sound will play
2. Apply single-use disposable probe cover to temperature probe before measurement

WARNING: The use of any other probe cover may produce temperature measurement errors or may result in inaccurate readings.

3. Place the temperature probe on site to begin spot-check
4. Wait for measurement to complete or return probe to abort measurement
5. If continuous monitoring is not needed, dispose of the probe cover and dock the temperature probe in the probe well to reset measurement

