

Mount Sinai SARS-CoV-2 Collection Kit Instructions



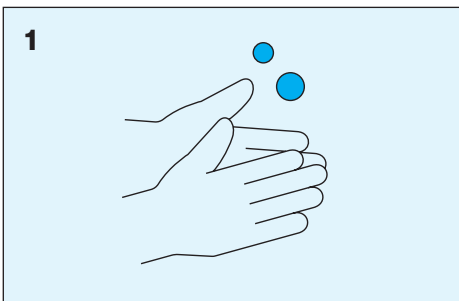
Warning: Read All Instructions Before You Start

Saliva Collection Kit Contents

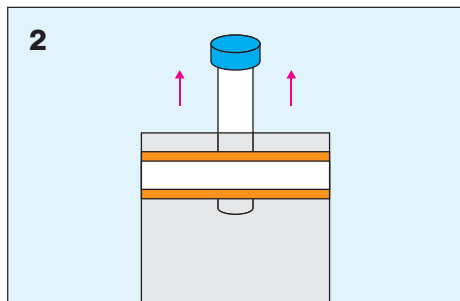
Saliva Collection Tube	Specimen Bag	Collection Card	Instructions
 <p>Funnels are available to assist with placing saliva into the tube. Request from EHS if you would like one.</p>		 <p>Mount Sinai SARS-CoV-2 Collection Sample: Name: _____ Life number: _____ Date sample was collected: _____ Time sample was collected: _____ am/pm Mount Sinai</p>	 <p>Mount Sinai SARS-CoV-2 Collection Kit Instructions</p>

How to Collect the Saliva Sample

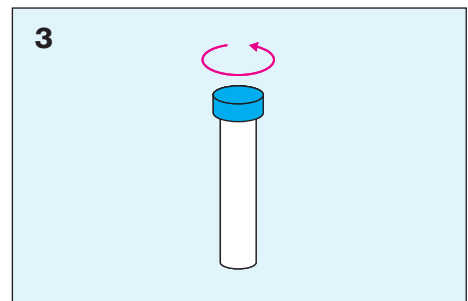
Do not drink, eat, smoke, or chew gum 30 minutes before saliva collection.
Do not use mouthwash or brush teeth 2 hours before saliva collection.



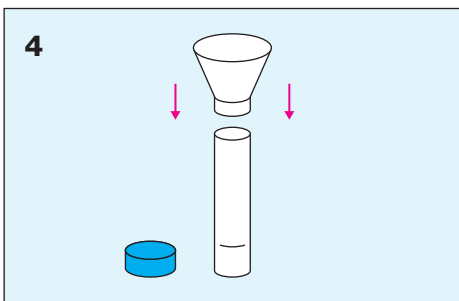
1 Please wash and dry, or sanitize, your hands.



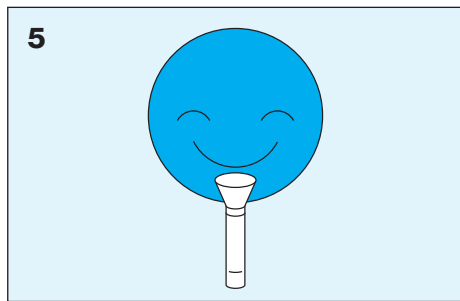
2 Remove the saliva collection tube from the specimen bag.



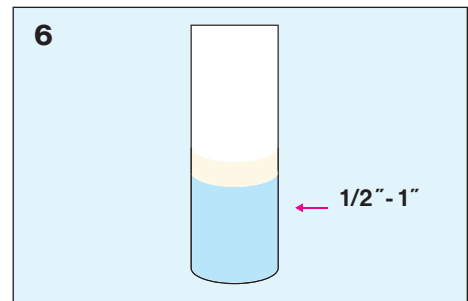
3 Unscrew tube cap and place the cap on a clean surface.



4 Attach funnel, if you are using one to assist saliva collection.

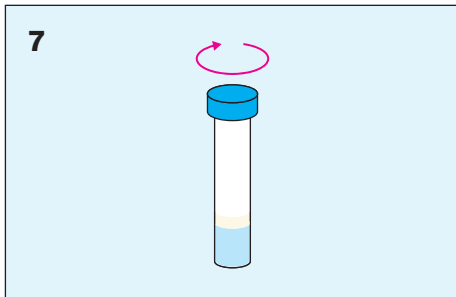


5 Pool saliva in mouth then drool into the tube. Repeat as many times as necessary to collect required amount of saliva.

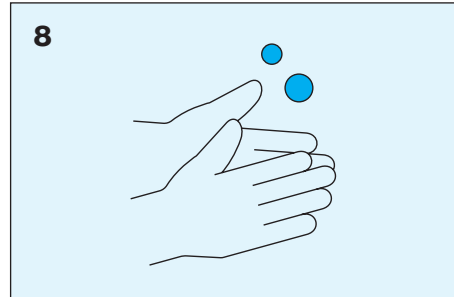


6 Please make sure you have filled the tube with enough saliva to test, about a half-inch to an inch high in the tube.

Mount Sinai SARS-CoV-2 Collection Kit Instructions *continued*



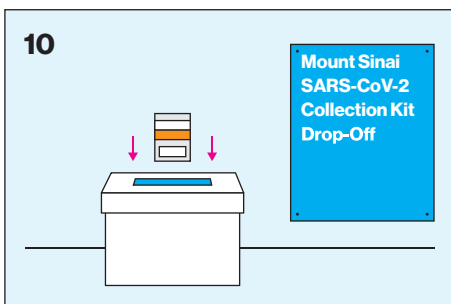
After collection, discard the funnel and close the tube tightly.



Wash and dry, or sanitize, your hands after capping the tube before re-packaging.



On the enclosed card, write your name, life number, and the date and time you produced the saliva sample.



Within 12 hours of producing your saliva sample, deliver it at room temperature to the Mount Sinai SARS-CoV-2 collection kit drop-off at your EHS office.

11
At the time of your sample drop-off at EHS, **pick up a new kit** for the next week's test.