

Center of Excellence for Multiple Myeloma

Sundar Jagannath, MD, Director



The Center of Excellence for Multiple Myeloma provides the most advanced diagnostic and treatment approaches in state-of-the-art facilities.



**Mount
Sinai**

*Tisch Cancer
Center*

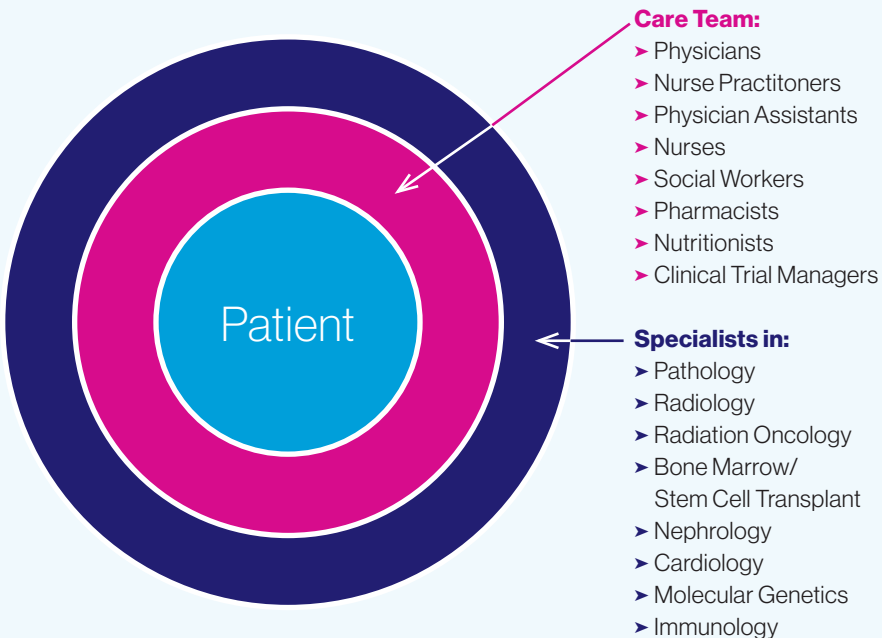
The Center of Excellence for Multiple Myeloma provides the most advanced diagnostic and treatment approaches in state-of-the-art facilities.

The Center of Excellence for Multiple Myeloma at Mount Sinai is a world leader in multiple myeloma patient care and research.

We provide comprehensive care featuring precision-medicine therapies based on each patient's unique disease profile that offer the best path for optimal outcomes with a high quality of life.

Our physicians have advanced expertise in the diagnosis and treatment of multiple myeloma, as well as precursor conditions—monoclonal gammopathy of undetermined significance (MGUS) and smoldering myeloma—and related diseases such as amyloidosis, Castleman disease, and Waldenstrom macroglobulinemia. Our physicians practice the art of medicine with an awareness of the whole patient and thoughtful attention to each individual.

We utilize a collaborative, team approach to make sure that every patient benefits from our collective expertise. Patients also benefit from Mount Sinai's vast network of physicians in every major medical specialty.





Mission

Our mission is to provide comprehensive, compassionate care for patients with multiple myeloma and related diseases and advance innovative research and treatment that lead to cure.

Clinical Expertise

Multiple myeloma is a complex cancer. It is best treated by physicians who see myeloma patients day in and day out and who have an in-depth understanding of myeloma biology. All members of our myeloma care team—physicians, nurses, pharmacists, and more—have specialized training and provide highly skilled care in both the inpatient and outpatient settings.

We are an integral part of the Mount Sinai Tisch Cancer Center and The Tisch Cancer Institute, which is a National Cancer Institute (NCI)-Designated Cancer Center.

NCI designation recognizes our standards of excellence and accomplishments aimed at prevention and cure.

Research

We are conducting groundbreaking research that integrates advances in genomics and immunotherapy. In collaboration with experts across the Mount Sinai network, we are investigating:

- New therapeutic targets for resistant disease
- CAR T-cell and antibody therapies
- Matching drugs to individual patients based on DNA and RNA analysis
- Prevention of progression from precursor conditions—monoclonal gammopathy of undetermined significance (MGUS) and smoldering myeloma—into active disease

Why Choose Mount Sinai for Myeloma Care?

- Expert myeloma physicians
- Multi-disciplinary team approach
- Access to Mount Sinai's network of medical specialists
- Research-driven treatments
- Clinical trial excellence
- Access to the latest therapies

Clinical Trials

Through our broad portfolio of clinical trials, we provide access to novel, life-saving approaches that feature the latest treatments such as immunotherapy, and incorporation of new drugs that are not available outside the clinical trial setting. We offer the latest T-cell and NK-cell directing therapies such as CAR T-cell therapy.

Supportive Care

We support patients and their loved ones in an environment of compassion, comfort, and sensitivity to diversity. Our experienced social workers provide cancer support services that address emotional, practical, and social needs. Patients have access to nutritional counseling, spiritual care, therapeutic massage, art therapy, support groups, and many other wellness programs.

Locations

We provide outpatient services at three locations across the New York metropolitan area :

• Uptown location

Our outpatient clinic is in the Derald H. Ruttenberg Treatment Center in the Leon and Norma Hess Center for Science and Medicine at 1470 Madison Avenue.

Our uptown location features a special clinic for patients with MGUS and smoldering myeloma.

• Downtown location

Our state-of-the-art clinic at The Blavatnik Family Chelsea Medical Center at Mount Sinai is located at 325 West 15th Street between 8th and 9th Avenues.

• Brooklyn location

Our outpatient clinic at Mount Sinai Brooklyn is located in Midwood at 3131 Kings Highway.

Some of our physicians see patients at multiple locations to provide optimal convenience.

Making an Appointment

Patients and referring physicians can call us at **212-241-7873** to arrange an appointment.

Patients from outside the United States are invited to contact Mount Sinai's Department of International Services, which can help coordinate appointments, financial arrangements, travel, and visas.

T: 212-241-1100

Email:

International.services@mountsinai.org

We work closely with patients' referring physicians to ensure continuity of care.

Contact Numbers

T: 212-241-7873

F: 212-241-8608

Office Hours: 9 am to 5 pm

Why Choose Mount Sinai for Myeloma Care?

- Special clinic for MGUS and smoldering myeloma
- Emphasis on the whole patient
- Supportive care
- Language translation services
- 24/7 Oncology Care Unit for urgent cancer care
- Caring environment for patients and their loved ones

Physicians



Sundar Jagannath, MD
Director



Hearn Jay Cho, MD, PhD
Chief Medical Officer for
the Multiple Myeloma
Research Foundation



Samir Parekh, MD
Director of
Translational Research



Shambavi Richard, MD
Co-director, CAR T and
Stem Cell Transplant



Joshua Richter, MD
Site Director of
Myeloma Services,
Chelsea



Cesar Rodriguez, MD
Clinical Director of
Multiple Myeloma,
The Mount Sinai Hospital



Adriana Rossi, MD
Co-director, CAR T and
Stem Cell Transplant



Larysa Sanchez, MD
Director,
Geriatrics in Myeloma



Santiago Thibaud, MD



**Mount
Sinai**

*Tisch Cancer
Center*

www.mountsinai.org/care/cancer/services/multiple-myeloma

Center of Excellence for Multiple Myeloma

1 Derald H. Ruttenberg Treatment Center

Leon and Norma Hess Center for Science
and Medicine

The Mount Sinai Hospital

1470 Madison Avenue, New York, NY 10029

212-241-7873

Center of Excellence for Multiple Myeloma

**2 The Blavatnik Family Chelsea Medical
Center at Mount Sinai**

325 West 15th Street, New York, NY 10011

212-241-7873

Center of Excellence for Multiple Myeloma

3 Mount Sinai Brooklyn

3131 Kings Highway, Brooklyn, NY 11234

212-241-7873

