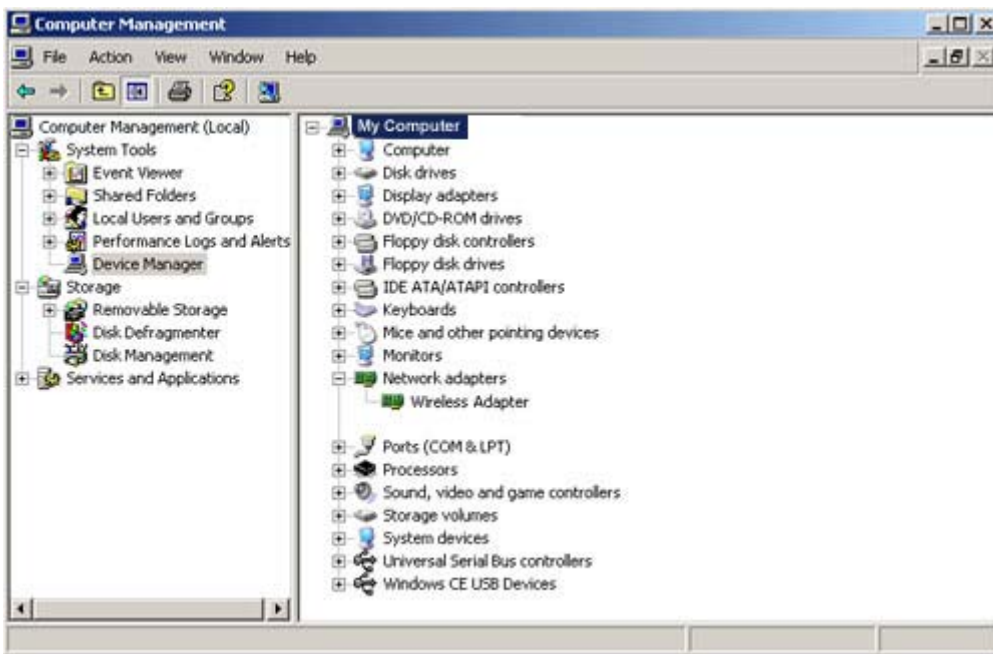


## Wireless Configuration for Windows XP

Most laptops today are equipped with wireless network cards. This 802.11b technology enables these computers to join a wireless network. Follow these steps to configure your PC with Windows XP to use its wireless card. You may use the links below to jump directly to a particular step in the setup process.

- Verify that the [Wireless hardware](#) is working.
  - Verify that your Wireless card is [registered with DHCP](#).
  - [Configure TCP/IP](#) to use your Wireless connection.
  - Configure your Wireless card to use the [Mount Sinai Guest Wireless Infrastructure](#).
  - [Test](#) your connection.
- 

### Verify that the Wireless hardware is working



Open the "Computer Management" administrative tool. It can be found by pressing the "Start" button, selecting "Settings" and clicking on "Control Panel". Double-click on "Administrative Tools", and then on "Computer Management". At left, click once on "Device Manager". At right, click the "+" next to "My Computer" to expand a list of device categories. Click the "+" next to the "Network Adapters" category. Your adapter should be listed, and there should not be a yellow exclamation point or a red "x" next to it. Absence of these marks indicates that the adapter is properly installed with the correct drivers and that there are no conflicts. If there is a yellow or red problem indicator on the adapter's icon, you may have to look at your device guide to troubleshoot the problems or call the [Technology Helpline](#).

---

### Verify that your Wireless card is registered with DHCP

Generally speaking, you will not need to register your card for DHCP. Instead, order for you to access the internet from your wireless card, you will first have to authenticate via a web page. This page will automatically launch if you have not authenticated. However, there may be some locations that still use the DHCP method for determining whether or not you are able to access the internet.

If you are not sure what areas are not configured for using the authentication method and which are not, you can register your card for DHCP service. It is free, and will not adversely effect other wireless services. There are online directions (<http://www.umn.edu/adcs/network/dhcp.html>) for registering your card with NTS. You

will be asked to enter the MAC address for your card. Keep in mind that it takes 1-3 hours after you submit the form for the registration to take effect.

---

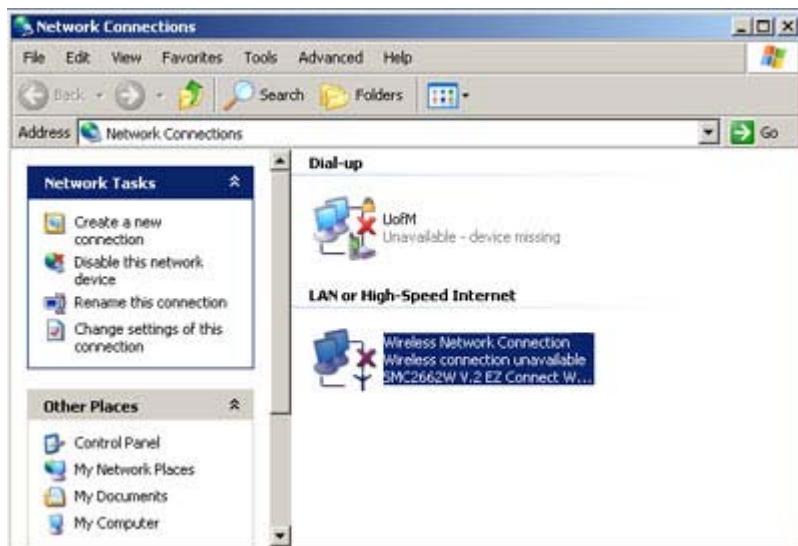
### Configure TCP/IP to use your Wireless connection

The TCP/IP protocol is used to connect your computer to the Internet. The [ethernet install](#) instructions should have guided you through the installation and configuration of TCP/IP for your operating system. You may wish to refer to those instructions again. Make sure you set the card up to use DHCP.

---

### Configure Wireless Card to use the Mount Sinai Guest Infrastructure

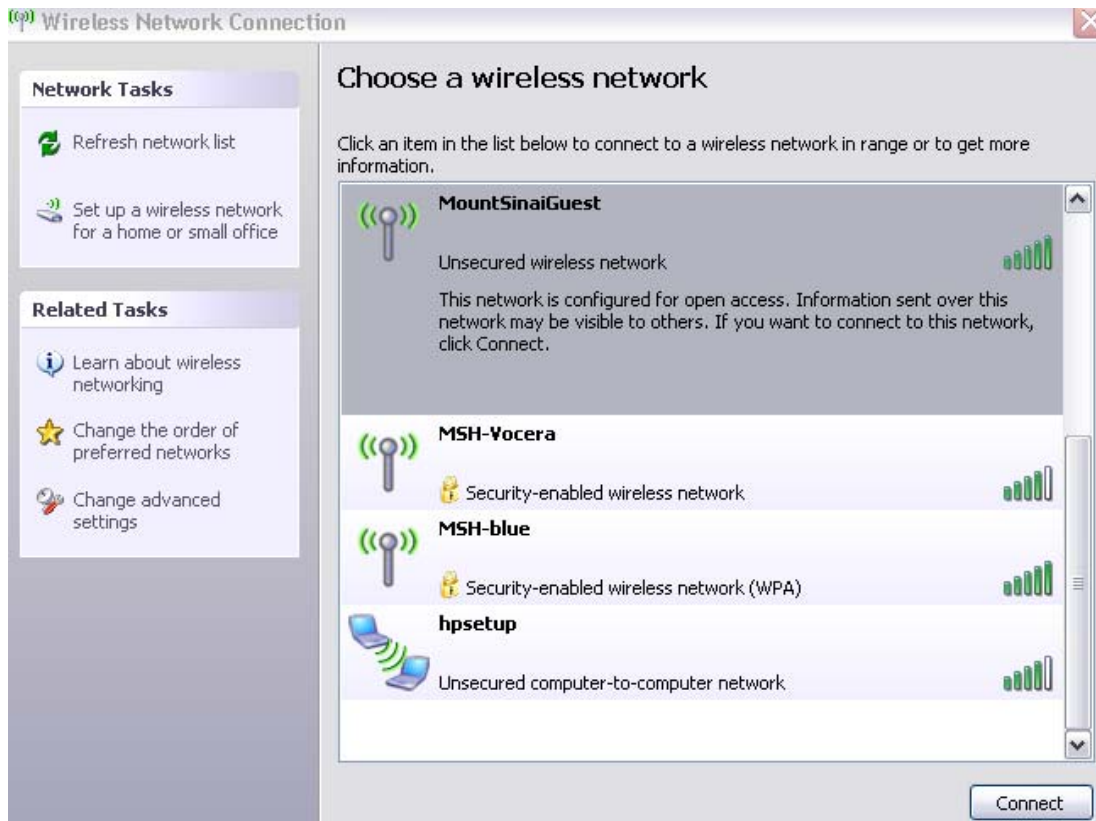
Windows XP has changed much of how a connection is made. This is true whether it is a wireless connection or any other connection. This change has made it somewhat simpler to access the wireless network. However, for those unfamiliar with this new way of doing things, configuring the wireless card can be a bit troublesome. The first thing you will need to find is the "Properties" of your "Network Connections". The simplest way to get to this location is to **right** click on the "My Network Places" icon and select properties.



You may notice that there is an "X" next to your wireless connection. This is expected. It shows that your wireless card is properly installed, but you have not as yet connected to a wireless network. You need to **right** click on the wireless network icon, and select "View Available Wireless Networks"

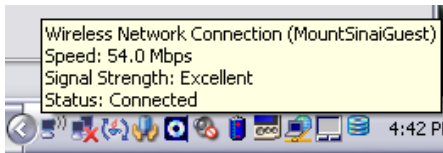


You should see a list of available wireless networks. If you do not see "MountSinai Guest" then you need to get into range of a Wireless Access Point.



In some instances, you may be using "Wire Equivalent Privacy" or WEP in some special cases. The Mount Sinai Guest Wireless infrastructure does not implement WEP, thus you will be informed that the wireless connection is not secure. If you select "Allow me to connect..." you will then be connected to the wireless system.

It may do some things, but an icon in the lower right hand corner of your desktop should eventually appear stating that you are connected.



You are now ready to authenticate to the Mount Sinai Guest Wireless system. If you have set your connection up for DHCP, you should be able to browse the internet at any of the wireless area networks around campus.

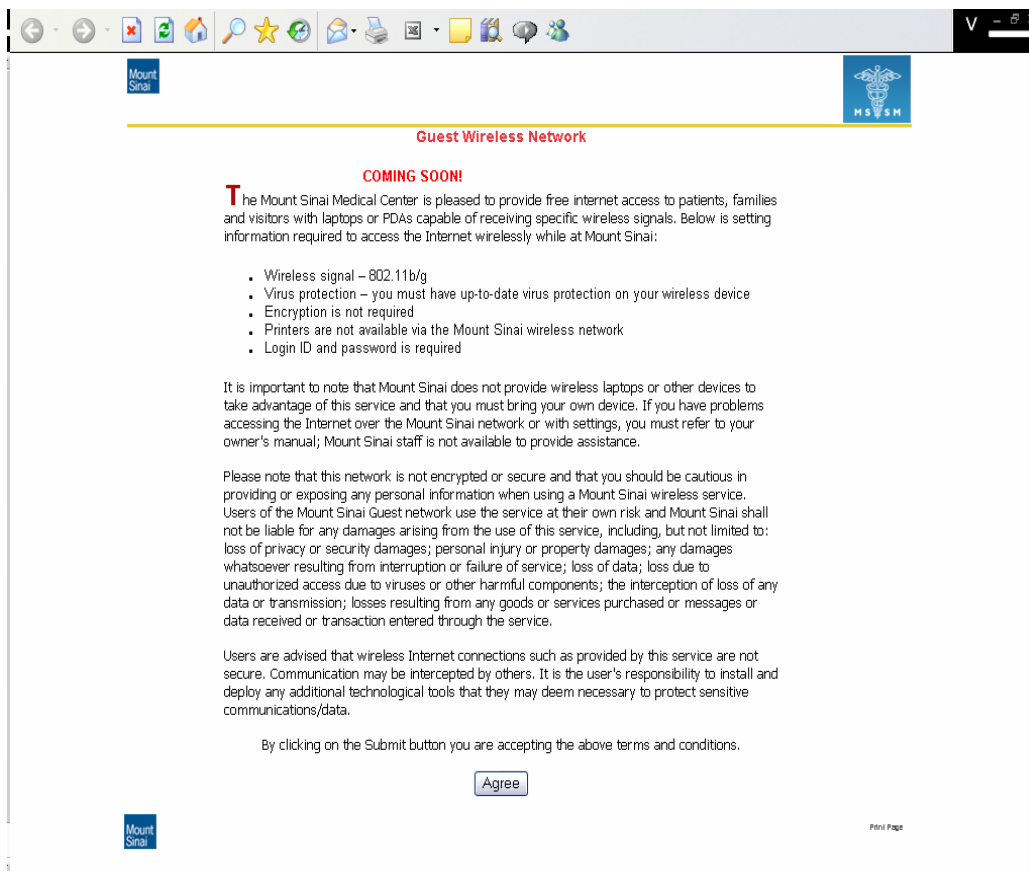
---

## Test your Wireless connection

To test the TCP/IP protocol, open your web browser (Internet Explorer or Firefox). Before the wireless authentication page come up, you may get the following Security Alert – click on YES.



You should see the wireless authentication page come up. If not, verify that your wireless card is working properly. (See the [first step](#) in this document).



**NOTE:** Even if you are planning on using another internet resource such as SSH or other service, you will still need to launch a web browser first and authenticate. After authentication, you will be able to access those other internet programs as you would normally.

If you have other Networking cards, you may want to remove them. The system will try to use all Network cards bound to TCP/IP. If a network card exists, but isn't attached to the network, it may try using that card to access the Internet.

You can type "ipconfig /Release" and "ipconfig /Renew" at a command window on Windows XP machines. This will attempt to communicate to the DHCP server. If an IP address is available, you will be assigned one quickly. If not, then the AP may be having problems, and you should try another location. If it works at another location, please contact the helpline about the problem. (612)301-HELP